

## TRIO MURITAI

+Rebecca Steel  
+Roger Brown  
+Rosemary Barnes

flute  
'cello  
piano

### REBECCA STEEL flute

Rebecca began her flute studies at *The Christchurch School of Instrumental Music*. She left university and the *Christchurch Symphony Orchestra* to take a position with the *Australian Opera and Ballet Orchestra*, in Sydney. After two years, she left for London to further her studies with the illustrious William Bennett.

On returning to New Zealand Rebecca took up the position of principal flute in the *Christchurch Symphony Orchestra* and lecturer of flute at the *University of Canterbury*.

When the opportunity arose to play in the *New Zealand Symphony Orchestra* and the *Wellington Regional Orchestra*, she moved to Wellington.

Since then, Rebecca lived in London for a year where she was playing with the *Philharmonia* and then Sydney for the last two decades, freelancing with the major orchestras, touring NSW for *Musica Viva* with the wind quintet *The Chambermaids*, and teaching in *The University of New South Wales* and schools.

Now she has returned to live in Wellington, she is playing principal flute with the *Royal New Zealand Air Force Band*, teaching, and loves touring with her friends and colleagues playing recitals and chamber music. •



### ROGER BROWN 'cello

Roger was originally from Christchurch and is a music graduate of *Canterbury University*, Roger is a former winner of the *NZ National Concerto Competition*. Scholarships from the *International Festival of Youth Orchestras* and the *QE2 Arts Foundation* took him to London to study with the distinguished 'cellist William Pleeth. He subsequently studied with Jaqueline du Pre and Antonio Janigro.

Roger was based in London for 23 years Playing mainly in chamber orchestras and ensembles. As a baroque 'cellist he performed with numerous period ensembles, including *The Sixteen* and *The Hanover Band*.

In 1999 Roger returned to New Zealand to take up a position with the *New Zealand Symphony Orchestra*, a position he held until 2019. Roger continues an active musical life both playing and teaching. In his spare time, he tramps, gardens, cycles and traps possums. •

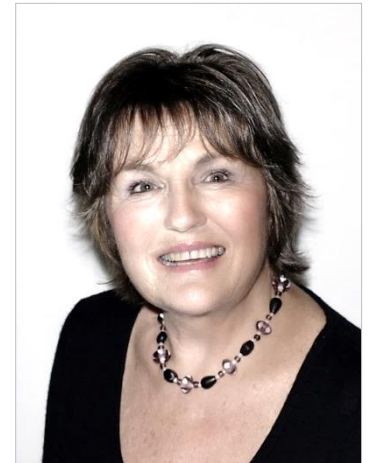


### ROSEMARY BARNES piano

Rosemary was born in Lower Hutt and is known nowadays more for her collaborative piano work.

She received early acclaim as a soloist for her radio, television and concerto appearances. She was awarded an *Arts Council* bursary, she studied in London with Franz Reizenstein *Royal Academy of Music*, Lamar Crowson and David Wilde. Her interest in languages led to 27 years in London, working mainly with singers, at *English National Opera* (music staff 1980-88), at the *Royal College of Music* and with *Glyndebourne Touring Opera*, *BBCTV*, *Musica nel Chostro* in Italy and *Opera Northern Ireland*. She performed at the *Wigmore Hall*, *South Bank*, *Usher Hall* in Belfast and on *BBC Radio 3*.

From 1993-99 Rosemary led the Postgraduate Opera Diploma at the *University of Auckland*. An official collaborative pianist at the *Gisborne International Music Competition* for 26 years, her performances include concerts with Dame Kiri Te Kanawa, Sir Donald McIntyre, Lesley Garrett, Pene Pati, Emil Chudnovsky (violin) and Robert Aitken (flute) and three CDs for the *Continuum* label. In 2000, Rosemary was awarded an *MNZM* for services to music. •



## HOMework

IF you would like to familiarise yourself with these four works ahead of the concert, we suggest you listen to the *YouTube* links provided below the programme notes.

## 'SPRING INTO SUMMER'

### PHILIPPE GAUBERT 1879–1941

Gaubert's *Pièce Romantique* is a beautifully sustained lyrical outpouring. It evolves from two themes: the 'cello's broad, exploratory opening melody is contrasted about halfway through by a gently rocking tune in 6/8 time in the pure high register of the flute. To close the work Gaubert combines the two, fortissimo, in an elegiac and particularly satisfying coda.

(About 8 minutes)

[https://www.youtube.com/watch?v=DIcDxN9XNqE&ab\\_channel=schelbergtrio](https://www.youtube.com/watch?v=DIcDxN9XNqE&ab_channel=schelbergtrio)

### JOSEPH HAYDN 1732–1809

Trio in D Major no 16 (Hob XV) is one of three trios for flute, 'cello and piano, published in 1790 (the year Haydn travelled to London). It is thought Haydn replaced the more usual violin voice with flute at the request of his London publisher John Bland who had visited the composer in Eszterháza the previous year. Amongst the most popular of Haydn's chamber music, this trio is in three contrasting movements and is full of joyful humour.

(About 15 minutes)

[https://www.youtube.com/watch?v=tAEkWjzzYuM&ab\\_channel=DeesseProds](https://www.youtube.com/watch?v=tAEkWjzzYuM&ab_channel=DeesseProds)

### CAMILLE SAINT-SAËNS 1835–1921

The alluring love aria *Softly Awakes my Heart* (from the second act of the opera *Samson and Delilah*) is one of Saint-Saëns' most famous melodies. Delilah's seductive words (on the flute) deceive Samson into revealing the secret of his strength. This subsequently causes him to be captured by his enemies.

(About 5 minutes)

[https://www.youtube.com/watch?v=OKQrBvBypNw&ab\\_channel=ThisisColoratura%21](https://www.youtube.com/watch?v=OKQrBvBypNw&ab_channel=ThisisColoratura%21)

### CARL MARIA VON WEBER 1786–1826

Trio in G minor opus 63 was completed in 1819. It is one of Weber's few pieces of chamber music. He wrote it for friends inspired by convivial evenings spent playing together. It is a whirl of virtuosity and striking contrasts.

The Allegro Moderato that opens the trio sets the tone for the whole work. The darker minor-key opening theme soon gives way to a sunny second theme that dominates most of this movement.

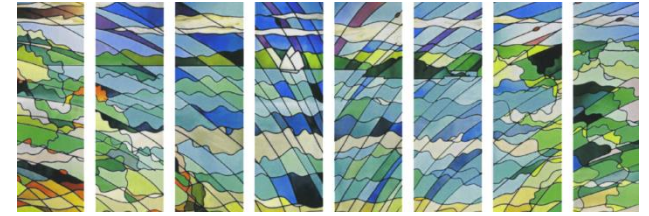
The Scherzo is also a movement of contrasts with a martial theme alternating with a frothy waltz.

The third movement 'Shepherd's Lament' is based on a Goethe poem that Schubert also set to music. Weber portrays the lovelorn shepherd in the field, playing his lonely tune.

The fourth movement is a high-spirited Finale with a profusion of melodies giving all three instruments a chance to shine.

(About 22 minutes)

[https://www.youtube.com/watch?v=1hU3l8RaleA&ab\\_channel=OPUS%EC%98%A4%ED%91%B8%EC%8A%A4](https://www.youtube.com/watch?v=1hU3l8RaleA&ab_channel=OPUS%EC%98%A4%ED%91%B8%EC%8A%A4)



## SUNDAY AFTERNOON CHAMBER CONCERT 4PM, 27 NOVEMBER 2022 'SPRING INTO SUMMER'

Flûte

Violoncelle

Piano

### TRIO MURITAI

Rebecca Steel flute  
Roger Brown 'cello  
Rosemary Barnes piano

### PROGRAMME

Gaubert *Pièce Romantique*

Haydn *Trio in D Major Hob XV-16*

*Allegro • Andantino piu tosto allegretto • Vivace assai*

Saint-Saëns: *Softly Awakes my Heart*

Weber *Trio in G Minor Opus 63*

*Allegro moderato • Scherzo (allegro vivace) • Schäfers Klage (Shepherd's Lament) • Finale (allegro)*

(About 52 minutes)

St Ronan's Presbyterian Church  
234 Muritai Road, Eastbourne  
For information and tickets, contact  
Sandy Lang [slang@xtra.co.nz](mailto:slang@xtra.co.nz)  
Tickets \$20, children free